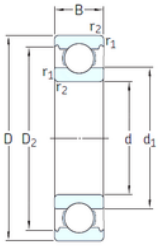




SKF Wheel Bearings DEVELOP MFG.CORP.



VA201



2Z/VA201



2Z/VA208



2Z/VA228

17 mm x 40 mm x 12 mm SKF 6203/VA201 deep groove ball bearings

Bearing No. 6203/VA201

6203/VA201 Bearing 2D drawings and 3D CAD models

Size	17x40x12 mm
Bore Diameter	17 mm
Outer Diameter	40 mm
Width	12 mm
d	17 mm
D	40 mm
B	12 mm
C	12 mm
d1	24,5 mm
r1 min.	0,6 mm
r2 min.	0,6 mm
D2	35 mm
Weight	0,065 Kg
Temperature -	30 to +250 °
Basic static load rating (C0)	4,75 kN
Category	Single Row Ball Bearings
Inventory	0.0
Manufacturer Name	SKF
Minimum Buy Quantity	N/A
Weight / Kilogram	0.07
Product Group	B00308
Enclosure	Open
Precision Class	ABEC 1 ISO P0
Maximum Capacity / Filling Slot	No
Rolling Element	Ball Bearing



SKF Wheel Bearings DEVELOP MFG.CORP.

Snap Ring	No
Internal Special Features	Polyalkylene Glycol/Graphite Mixture Filled
Cage Material	Steel
Internal Clearance	C0-Medium
Inch - Metric	Metric
Long Description	17MM Bore; 40MM Outside Diameter; 12MM Outer Race Width; Open; Ball Bearing; ABEC 1 ISO P0; No Filling Slot; No Snap Ring; Polyalkylene Glycol/Graphite Mixture Filled Internal Special Features; C0-M
Other Features	Deep Groove Extreme Temperature Variant
Category	Single Row Ball Bearing
UNSPSC	31171504
Harmonized Tariff Code	8482.10.50.68
Noun	Bearing
Keyword String	Ball
Manufacturer URL	http://www.skf.com
Weight / LBS	0.146
Outer Race Width	0.472 Inch 12 Millimeter
Bore	0.669 Inch 17 Millimeter
Inner Race Width	0 Inch 0 Millimeter
Outside Diameter	1.575 Inch 40 Millimeter
d ₁	24.5 mm
D ₂	34.98 mm
r _{1,2} min.	0.6 mm
d _a min.	21.2 mm
D _a max.	35.8 mm
r _a max.	0.6 mm
Basic dynamic load rating C	9.95 kN



SKF Wheel Bearings DEVELOP MFG.CORP.

Basic static load rating C_0	4.75 kN
Limiting speed	310 r/min
Limiting temperature T max.	250 ° C
Mass bearing	0.065 kg